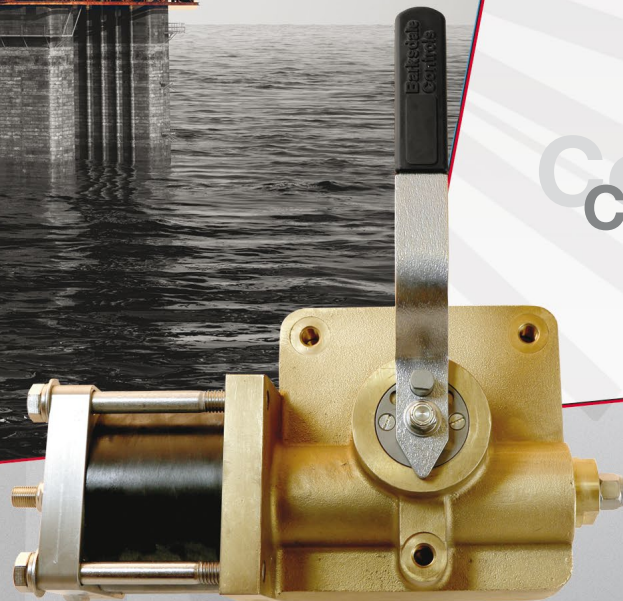


Shear-Seal® Valve

Actuated Heavy Duty Valve



Control
every move

- ▶ Shear-Seal® Technology
- ▶ Stainless Steel body
- ▶ **NEW OPTION:** 1-1/2" NPT with 5,000 psi

Barksdale®

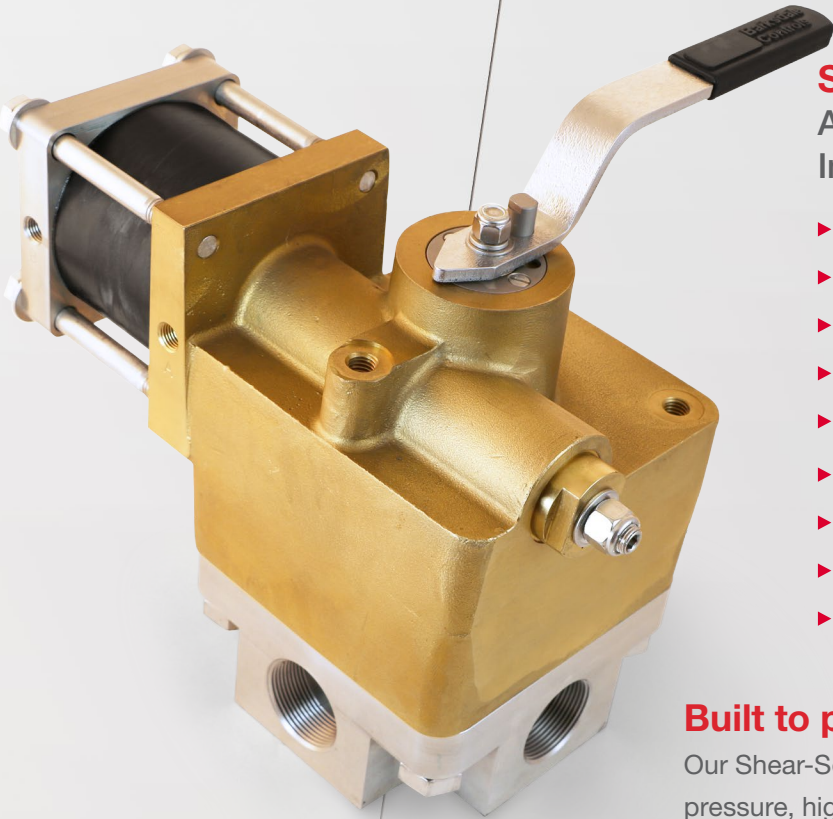
CONTROL PRODUCTS

CRANE

Barksdale, Inc./Barksdale GmbH
A Subsidiary of Crane Co.

Series II Valves

1-1/2" NPT with 5000 psi



Series II Valves

A Heavy Duty Shear-Seal® valve with an Integrated Actuator

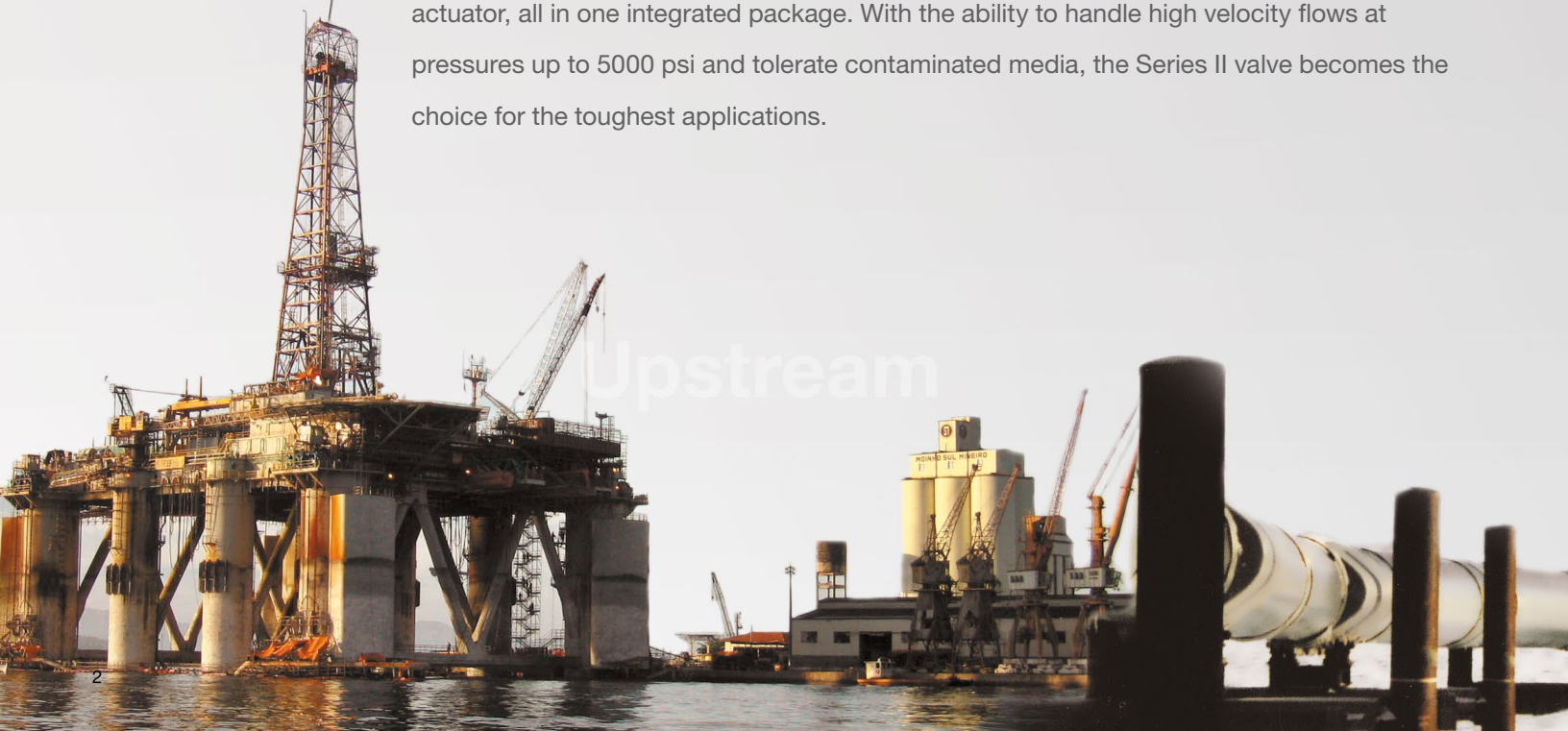
- ▶ Actuated Shear-Seal® Valve
- ▶ **NEW** 1-1/2" NPT with 5,000 psi
- ▶ **NEW** Stainless Steel body
- ▶ 1/4" through 1-1/2" port sizes
- ▶ 3,000 psi and 5,000 psi options
- ▶ NPT or SAE port threads
- ▶ Tolerates contaminated media
- ▶ High velocity flow
- ▶ Patented design

Built to perform

Our Shear-Seal® valve products are designed to thrive in high pressure, high flow, dirty environments where the need for zero leakage is an absolute necessity. They provide a high level of safety, quality and reliability for equipment world-wide.

Barksdale's patented Series II valve provides an optimal solution by combining the dependable features of our heavy duty Shear-Seal® valves with the reliability of a rack and pinion pilot actuator, all in one integrated package. With the ability to handle high velocity flows at pressures up to 5000 psi and tolerate contaminated media, the Series II valve becomes the choice for the toughest applications.

Upstream

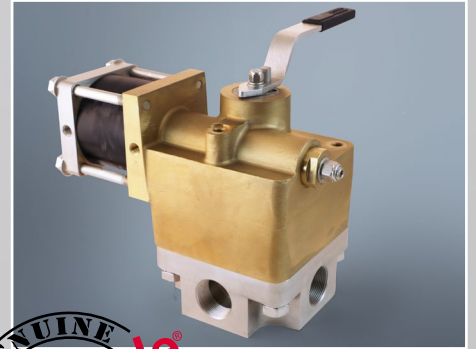


Trusted technology

Engineered for precise control

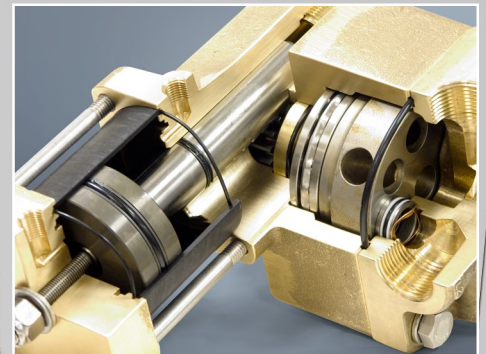
Proven Reliability

For over 65 years, Barksdale's revolutionary Shear-Seal® valve design has been recognized as the industry standard for demanding applications in the Oil & Gas industry. Designed to provide years of trouble-free operation and virtually zero leakage, the Shear-Seal® design uses fluid pressure to maintain a leak-free metal-to-metal seal that improves with use. The shearing action between the rotor & pressure seal continually laps the mating surfaces and prevents contaminants from lodging between the sealing surfaces. The result is a valve that doesn't wear out – but wears in over time, providing you superior control consistently through the entire life of the product.



Integrated Rack & Pinion Actuator Design

- ▶ Reduces installation time: eliminates the labor intensive steps to mount conventional linear actuator hardware and its associated issues with respect to positioning and leakage.
- ▶ Eliminate cylinder mounting and hardware with an integrated solution.
- ▶ Ability to handle high velocity flows at pressures up to 5,000 psi for contaminated media.



Did you know? Barksdale offers a complete line of mechanical and electronic pressure, temperature, level and flow switches as well as pressure transducers, regulator and valve product lines. Visit www.barksdale.com to see our product portfolio.



Visit our online product page ▶



▲ Explosion Proof Pressure Switch



▲ Explosion Proof Pressure Transducer



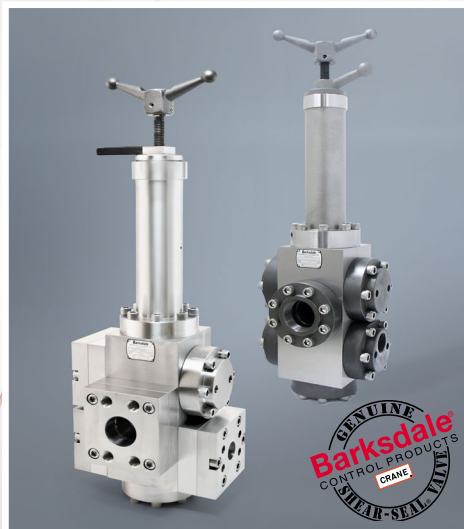
▲ Shear-Seal® Heavy Duty Valves



▲ Explosion Proof Temperature Switch



▲ LevelSite®



▲ Shear-Seal® Heavy Duty Hydraulic Regulator



▲ Explosion Proof Electronic Pressure Switch

Contact your regional distributor today!

Barksdale Inc.

3211 Fruitland Avenue
 Los Angeles, CA 90058-0843
 U.S.A.
 Phone: (323) 589-6181
 Fax: (323) 589-3463
 E-mail: sales@barksdale.com
www.barksdale.com

Barksdale®
 CONTROL PRODUCTS